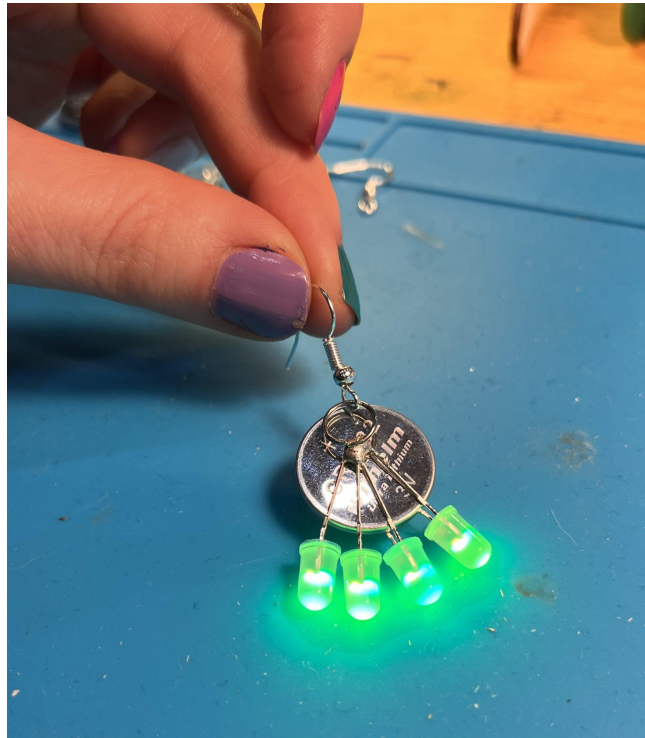




LED Jewelry



Quantity	Description
12	RGB LEDs 5 mm
2	Ear studs
3	Large jump rings (8 mm – 12 mm)
3	Small jump ring (4mm)
1	CR2032 Battery (not included)

Difficulty: ●●○○○ Build-Time: 30 – 60 Minutes

Manual v2.0  CC BY-SA 4.0 Binary Kitchen e.V.
Board v1.0  CC BY-NC-SA 4.0 verschiedenart.de

Safety Information

- ATTENTION: Not suitable for children under 3 years, choking hazard due to small parts that may be swallowed.
- We recommend: Supervision of the assembly and soldering process by an adult.
- Keep these operating instructions in a safe place for later use! It contains important information.
- If the battery is empty, replace it only with a new battery with the same values.
- When soldering, the soldering iron, the solder and also the components being soldered become very hot.
- Always wear safety glasses when soldering and assembling the kit.
- Always use a fire proof soldering pad when soldering! This prevents the components from slipping away.
- To keep the soldering iron safe during assembly, always use a suitable soldering stand.
- The kit is designed for battery operation only.
- CAUTION: Never connect the kit to 230 V mains voltage! There is an absolute danger to life!
- Please take the device to appropriately certified disposal companies at the end of its service life. This is good for the environment and ensures correct disposal.
- Subject to changes and errors.

Disposal

This appliance is labelled in accordance with the European Directive 2012/19/EU on waste electrical and electronic equipment (WEEE). The directive provides the legal framework for the take-back and recycling of waste equipment throughout the EU.

- **packaging:** The packaging is made of environmentally friendly materials and is therefore recyclable. Dispose of packaging materials that are no longer needed accordingly.
- **waste equipment:** Old appliances often still contain valuable materials. Therefore, hand in your old appliance to your retailer or a recycling centre for reuse. Please ask your retailer or your local authority for the current disposal routes.

blinkyparts.com
Egerstr. 9
93057 Regensburg
GERMANY



Step 1

- a) Place the LEDs on the coin in the arrangement, as they will later hang on the pendant.
- b) It is important that the long legs of the LEDs (+) are all on one side and all short LED legs (-) are on the other side of the coin.
- c) The long legs of the LEDs (+) should touch each other.
- d) If the legs do not yet touch in your arrangement, you can bend the legs towards each other.
- e) Make sure that you can remove the coin again after soldering.



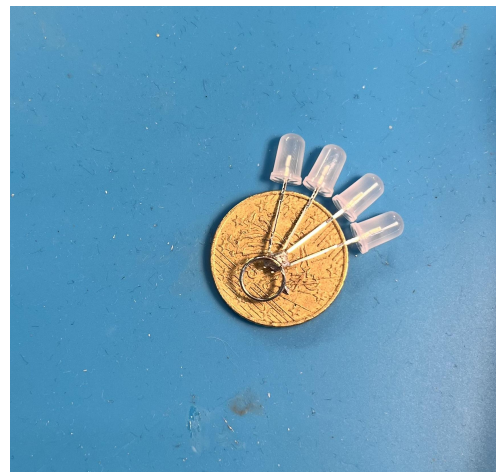
Step 2

- a) Heat the leg tips that touch each other with the soldering iron for about 3-4 seconds.
- b) Then hold the solder to the hot legs and the soldering iron and spread the solder over the ends of the legs.
- c) All long leg tips should be soldered together.
- d) No solder should land on the coin and the legs should not be soldered to the coin.



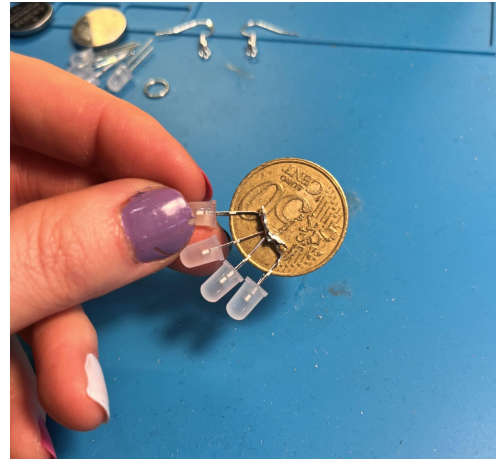
Step 3

- a) Heat the solder joint you just made again with the soldering iron.
- b) Take the ring with the tweezers and press it with one side into the liquid solder so that the ring extends as far as possible beyond the ends of the legs.
- c) The small ring or the earring hook will later be attached to this.



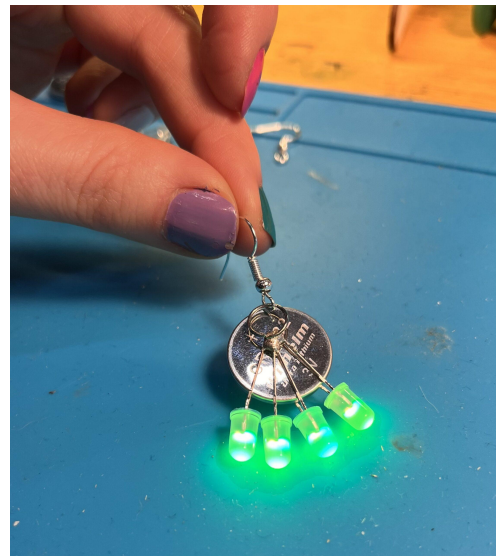
Step 4

- a) Now turn the coin over. The legs on the other side should also touch each other.
- b) Heat the legs at the solder joint with the soldering iron for about 4 seconds.
- c) Then hold the solder to the heated spot and the soldering iron and connect the legs together with the melting solder.
- d) Alternatively, you can also solder the ends of the legs together without a ring and bend the last 4-5 mm of the LED legs at a 90° angle, so that they form a horizontal edge.



Step 5

- a) Remove the coin.
- b) Insert the battery instead. The smooth side of the battery should face the long legs and the ridged side should face the short ones.
- c) You may need to bend the short legs a bit more into a kind of pocket, so that they do not touch the edge of the battery.



Step 6

- a) Now hook either the small ring into the ring on the front to attach your pendant to a chain, or the earring hook to wear your pendant as an earring.
- b) Make sure to close the small rings carefully, so that you don't lose your pendant.



Step 7

- a) If you like, you can now decorate your jewelry pendant with small decorative pendants.
- b) Just make sure that the decorative elements, if they are made of metal, do not get between the LEDs and their legs and connect + and - there, causing a short circuit.
- c) If there are still small pointed ends of the LEDs or solder protruding, you can carefully cut them off with side cutters.

