



Cat in a Box



Quantity	Description
2	RGB LEDs 5 mm
1	Push button
1	CR2032 battery holder
1	CR2032 battery (not included)
1	Board (PCB)

Difficulty: ●●○○○ Build-Time: 30 – 60 Minutes

Manual v2.0  CC BY-SA 4.0 Binary Kitchen e.V.
Board v1.0  CC BY-SA 4.0 Timo Schindler

Safety Information

- ATTENTION: Not suitable for children under 3 years, choking hazard due to small parts that may be swallowed.
- We recommend: Supervision of the assembly and soldering process by an adult.
- Keep these operating instructions in a safe place for later use! It contains important information.
- If the battery is empty, replace it only with a new battery with the same values.
- When soldering, the soldering iron, the solder and also the components being soldered become very hot.
- Always wear safety glasses when soldering and assembling the kit.
- Always use a fire proof soldering pad when soldering! This prevents the components from slipping away.
- To keep the soldering iron safe during assembly, always use a suitable soldering stand.
- The kit is designed for battery operation only.
- CAUTION: Never connect the kit to 230 V mains voltage! There is an absolute danger to life!
- Please take the device to appropriately certified disposal companies at the end of its service life. This is good for the environment and ensures correct disposal.
- Subject to changes and errors.

Disposal

This appliance is labelled in accordance with the European Directive 2012/19/EU on waste electrical and electronic equipment (WEEE). The directive provides the legal framework for the take-back and recycling of waste equipment throughout the EU.

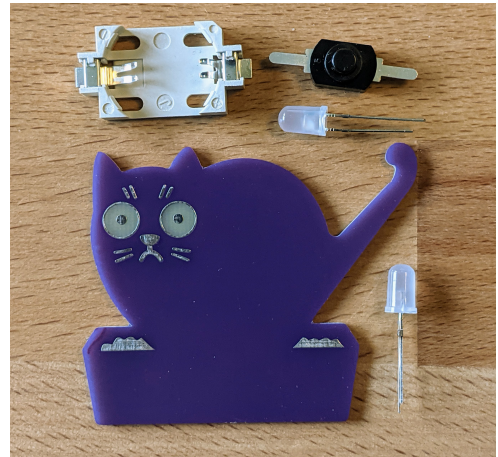
- **packaging:** The packaging is made of environmentally friendly materials and is therefore recyclable. Dispose of packaging materials that are no longer needed accordingly.
- **waste equipment:** Old appliances often still contain valuable materials. Therefore, hand in your old appliance to your retailer or a recycling centre for reuse. Please ask your retailer or your local authority for the current disposal routes.

blinkyparts.com
Egerstr. 9
93057 Regensburg
GERMANY



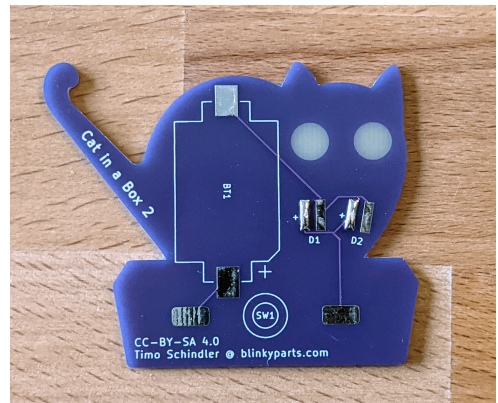
Step 1

- a) Check your parts.
- b) A CR2032 battery is not included. You can get them online or at bigger electronic stores.



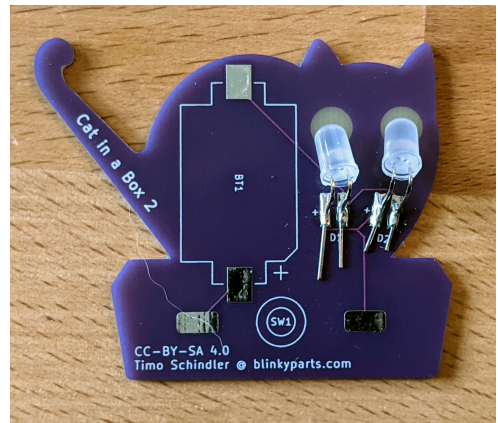
Step 2

- a) Turn the PCB to the back-side.
- b) Add solder to all four long LED-Pads marked with an +.



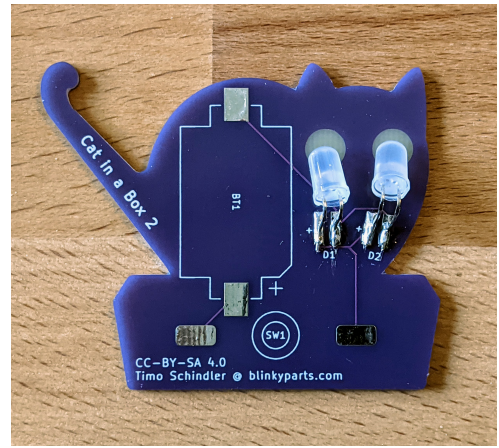
Step 3

- a) The long leg of the LED marks the positive side.
- b) Bend the legs, so that the LED lays flat on the board and the legs are also touching the board.
- c) Solder the positive leg (long) to the positive pad where you've added the solder already.
- d) Ensure that the second leg also touches the other pad without solder.



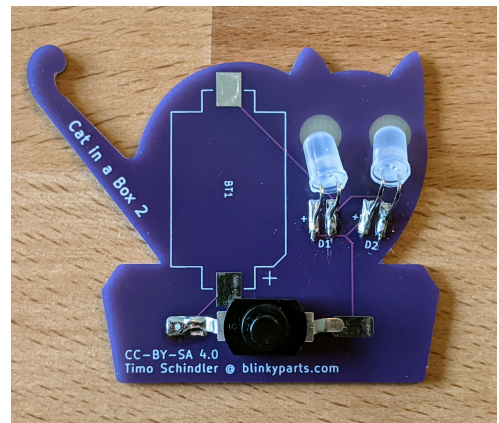
Step 4

- Solder the other leg of the LED (cathode, negative side) to the board.
- Cut away the excess of the legs.



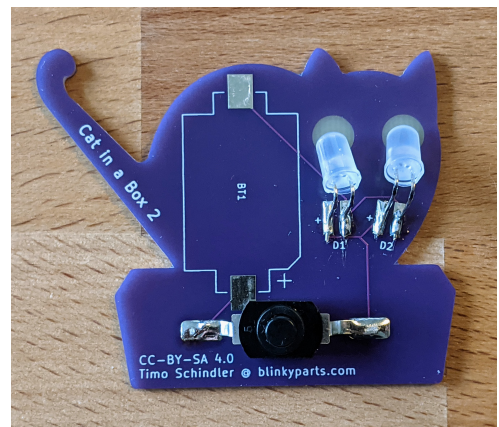
Step 5

- The button has no direction
- Add solder to one pad of the button.
- Bend the legs of the button so it can touch the surface of the board.
- Heat up the pad with the solder again and push the button from the side onto the pad.
- Make sure the other leg of the button touches the other pad.



Step 6

- Solder the other leg of the button onto the board.



Step 7

- The battery holder has a direction marked with an cut edge. You can find the same missing edge also on the board
- Add solder to one pad of the battery holder.
- Heat up the pad with the solder again and push the batteryholder from the side onto the pad.
- Make sure the other leg of the battery holder touches the other pad.
- Solder the other leg onto the other pad on the board.



Step 8

- a) If you wish, you can add hot glue to the yellow part of the board on the back-side. This helps distribute the light of the LED better.



Step 9

- a) Insert the battery as shown of the picture.
- b) The receivers of the positive side need to touch the top of the battery. Slide it from the left in and push only the left side down.



Step 10

- a) You are finished!
- b) You can attach a magnet to the battery to better attach the solder kit to your clothing.

